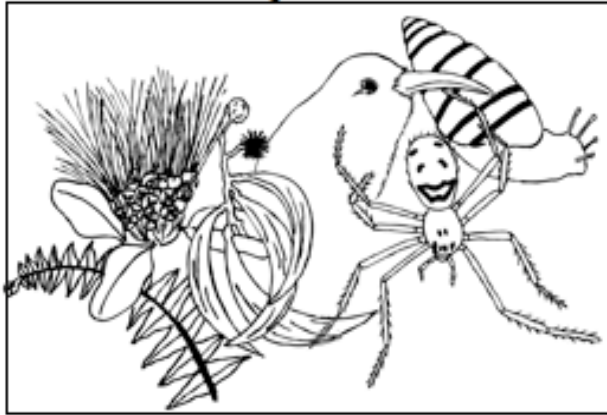
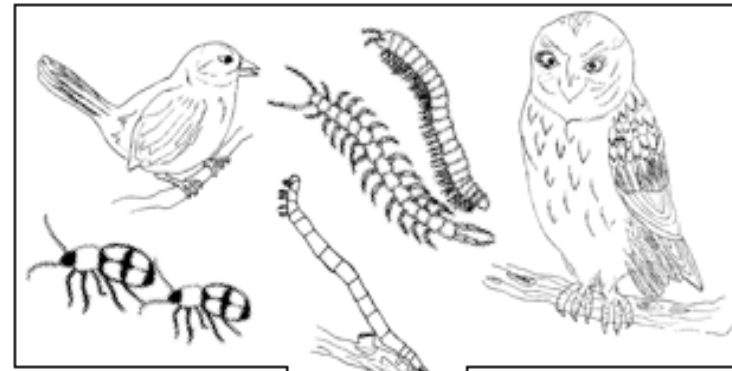




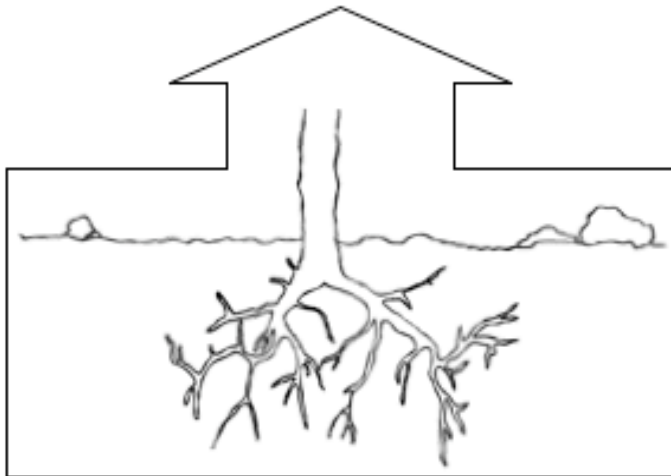
Plants and animals grow extracting nutrients from the soil or by eating plants that have taken up nutrients, these organisms eventually die.



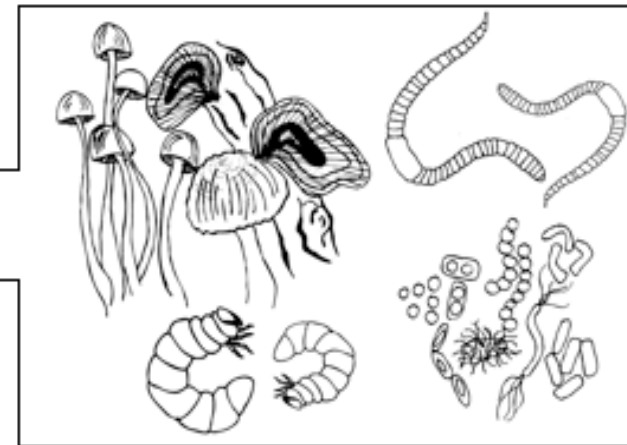
Here decomposers begin the break down by breaking dead plant and animal material into smaller pieces.



# The Breakdown



In the newly created soil plant roots help breakdown even further as they push through the soil, and take up nutrients at the same time.



Next, more decomposers aid the breakdown the organic material by eating it and extracting nutrients, creating soil.